



ONE OXYGEN CONCENTRATOR OPERATION FOR TWO PATIENTS

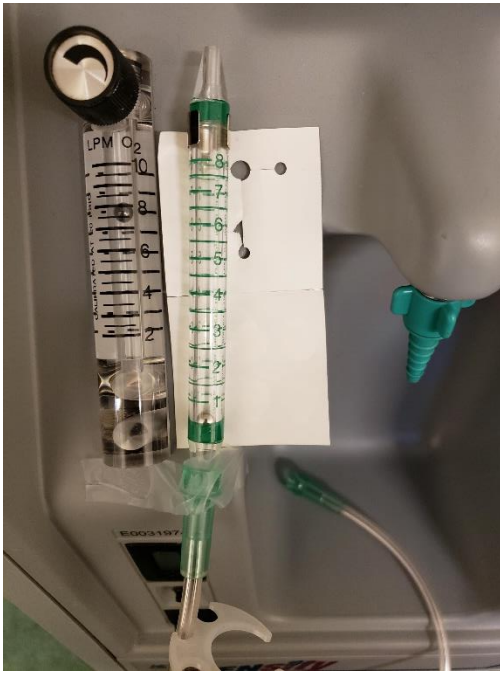
POLICY

DURING CERTAIN EMERGENCY SITUATIONS, SUCH AS EQUIPMENT SHORTAGES DUE TO MANUFACTURERS DEPLETION OF SUPPLY (BECAUSE OF MEDICAL EMERGENCY DEMANDS), THE USE OF ONE OXYGEN CONCENTRATOR FOR TWO PATIENTS MAY NEED TO BE CONSIDERED. THE FOLLOWING ARE GUIDELINES TO TAKE IN ORDER TO ACHIEVE THE PRESCRIBED FLOW RATE:

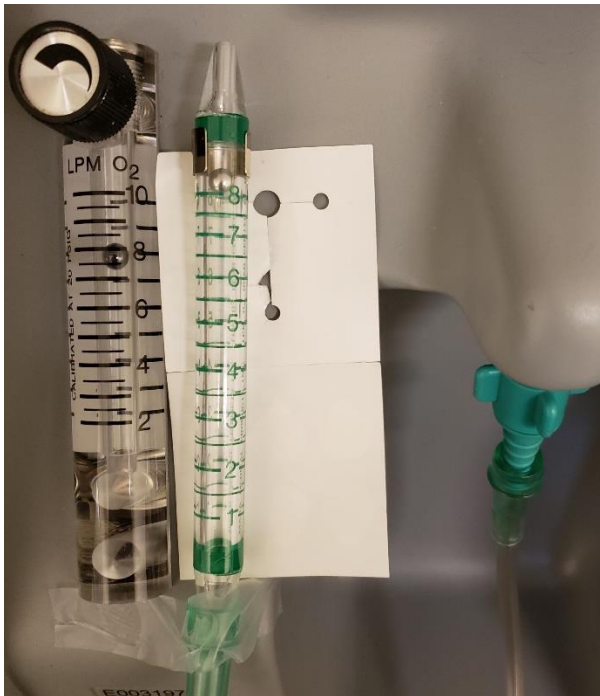
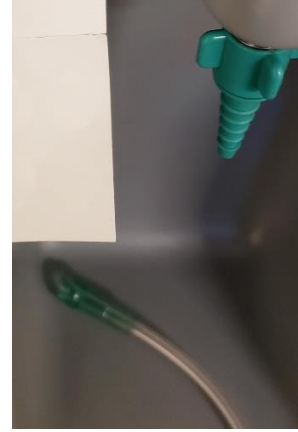
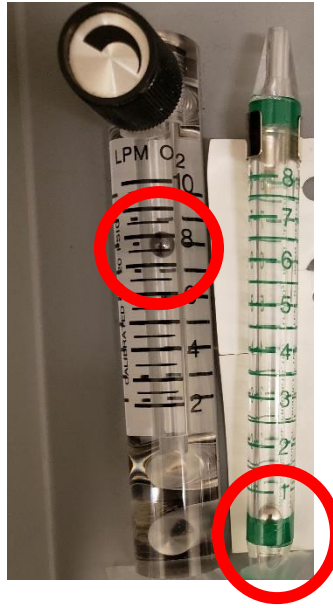
- BOTH PATIENTS HAVE TO BE ORDERED FOR SAME FLOW RATE. EXAMPLE BOTH PATIENTS ORDERED FOR 2 LITERS PER MINUTE (LPM) BY NASAL CANNULA.
- WHEN BOTH PATIENTS ARE ORDERED FOR 2 LPM THE CONCENTRATOR NEEDS TO BE SET BETWEEN 4 – 5 LPM. THE CONCENTRATOR WILL HAVE ONE OXYGEN TUBING (7FT.) CONNECTED TO A WYE ADAPTER. FROM THE WYE ADAPTER CONNECT TWO OXYGEN TUBING EXTENSIONS. DEPENDING ON DISTANCE BETWEEN PATIENTS THE EXTENSION TUBING CAN BE 7FT – 14 FT.
- THE MAXIMUM LENGTH OF THE OXYGEN TUBING CIRCUIT (FROM THE WYE) IS 21 FEET. THIS IS A COMBINATION OF TUBING EXTENSIONS (MAX 14 FT.) FROM THE WYE TO THE PATIENTS 7 FT. NASAL CANNULA. AN OXYGEN TUBING CONNECTOR WILL BE NEEDED TO ATTACH THE 14FT. OXYGEN TUBING TO THE 7FT NASAL CANNULA.
- THE 7 FT NASAL CANNULA HAS TO BE IDENTICAL FOR THE TWO PATIENTS.
- THE MAXIMUM EXTENSION TUBING FROM THE CONCENTRATOR TO THE WYE IS 7 FEET.
- SUPPLIES NECESSARY FOR SETUP.
 - 1- 5L CONCENTRATOR FOR PATIENTS NEEDING A MAX OF 2.5L.
 - 1- 10L CONCENTRATOR FOR PATIENTS NEEDING MAX OF 5L.
 - 2- 14 FT OXYGEN EXTENSION TUBING OR LESS, BOTH AT IDENTICAL LENGTH.
 - 1- 7FT OXYGEN EXTENSION TUBING.
 - 1 - WYE CONNECTOR.
 - 2- OXYGEN TUBING CONNECTORS
 - 2 - 7 FOOT NASAL CANNULA

NOTE: VERIFY FLOW RATE WITH FLOW METER CHECKER SHOWN IN PHOTOS.

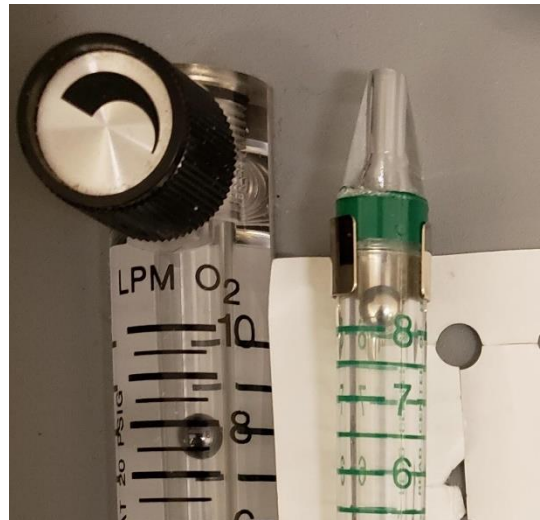
PHOTOS SHOWING EXAMPLES OF STUDY

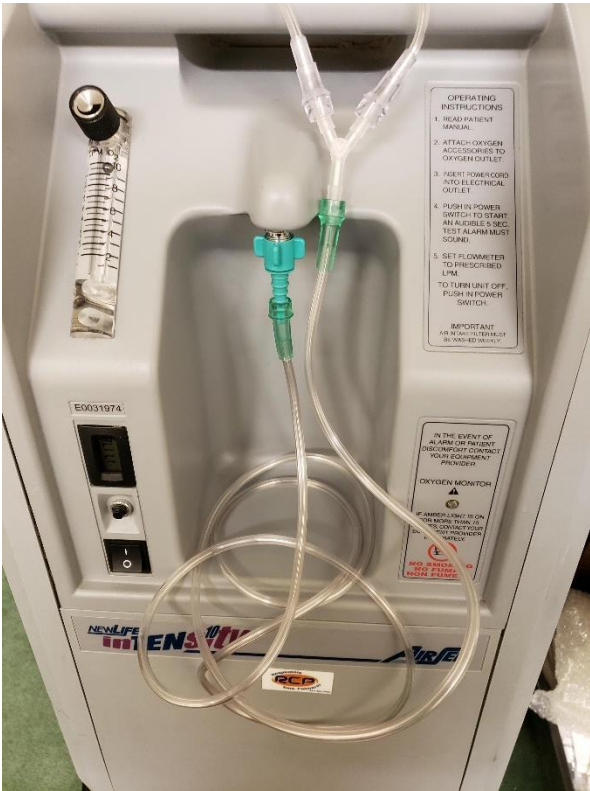


CONCENTRATOR SET AT 8 LPM WITH NO TUBING CONNECTED.

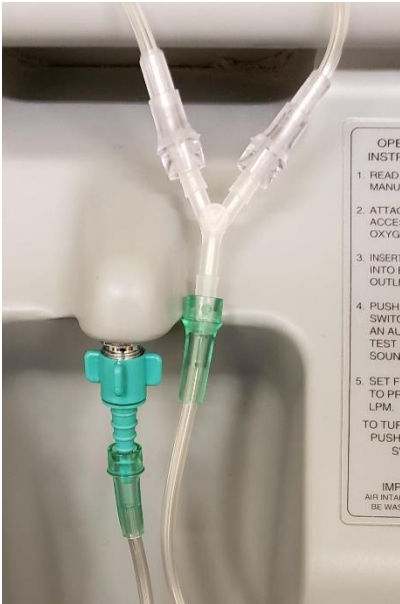


VERIFICATION OF FLOW





SINGLE TUBING SPLIT TO TWO PATIENTS



RESULTS WITH CONCENTRATOR SET AT 10 LPM

CONCENTRATOR SET AT 5 LPM

